



# D&K Capabilities



## **What can be Powder Coated?**

Anything metal may be powder coated. Examples include industrial and manufacturing parts, car frames and parts, farm equipment, railings, fencing, cast iron, etc.

## **Col-Met Custom Batch Ovens:**

Big Oven: 16' x 12' x 52'  
Small Oven: 14' x 10' x 30'

## **Col-Met Custom Paint Booths:**

Equipped with GEMA OptiFlex II application systems

Big Booth: 16' x 12' x 45'  
Medium Booth: 16' x 12' x 30'  
Small Booth: 10' x 10' x 20'

## **Blast Booths:**

We use both Steel Grit and Aluminum Oxide Media in our blast booths.

Clemco Aluminum Oxide Booth: 15' x 12' x 28'  
ABS Steel Grit Booth: 20' x 14' x 51'

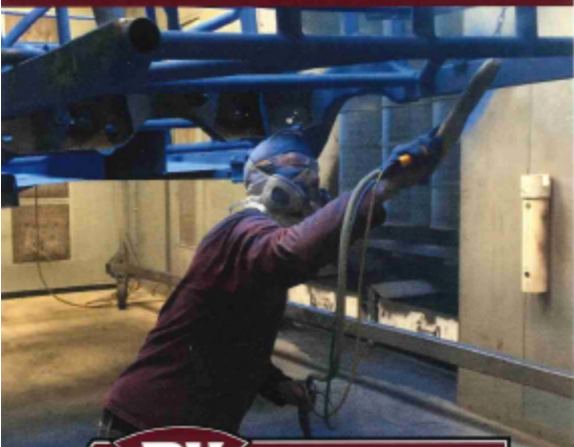
## **Wash/Conversion Coating System:**

We feature a custom-built manual wand wash station with 2-7 stages of manual wash.

## **Crane Capacity:**

Multiple twin I-beam cranes with up to 40,000 lbs. lifting capacity.

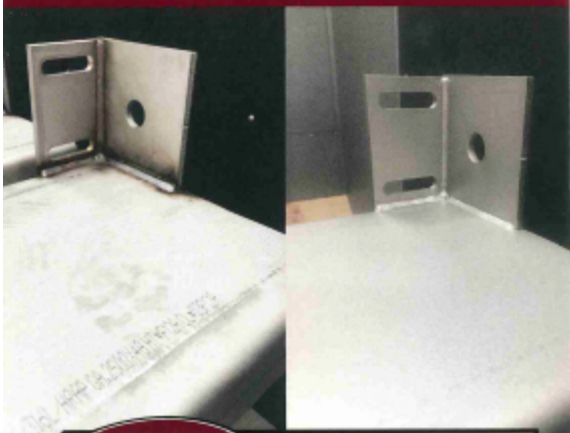
# Why Powder Coating?



**POWDER COATING** finishes are applied electrostatically and cured under heat. Powder coating creates a long-lasting finish that is substantially stronger than conventional paint. Powder coating is a solvent-free, environmentally friendly finish that virtually eliminates air and water pollution. Powder coating is one of the most durable and least expensive paint finishes available today!

**COST** is calculated by a variety of factors such as surface area, weight, complexity to hang and handle, the preparation process, and the finish chosen. D&K Powder Coating provides customers with fair and competitive pricing.

# Media Blasting



**MEDIA BLASTING** is a process used to strip paint, rust, scale, and other debris from a surface to prepare for finishing services or to provide the finished profile based on customer request.

- 20+ years combined blasting experience
- Fully integrated reclaim systems to minimize environmental impact
- Maximum efficiency for economical costs to customers
- Several media options available, including different types of material and coarseness
- Ability to expedite projects as needed
- Aluminum Oxide, Stainless Steel Bead, Steel Grit and Glass Bead available
- Multiple Booths with part capacity up to 20' x 12' x 50' L

D&K offers complete blasting services to achieve the desired finish according to your needs.

# D&K Delivers



**D&K Powder Coating  
accommodates all  
delivery needs!**

## **Delivery Options:**

- 26' box truck
- 20' deckover flatbed trailer
- 40' gooseneck flatbed trailer

**Call to learn more at  
(507) 388-4100**

